

# GRUBBENS DEFLAKER



# GRUBBENS DEFLAKER

**G**rubbens deflaker is used for separating of fibres in broke systems, virgin pulp systems and waste

handling. Even wet strength paper qualities can be deflaked.

In the Grubbens deflaker the pulp passes through eight vibration zones under continuous flow reversals and is therefore well processed without fibre bundles in spite of the low peripheral speed.

The design of the deflaking discs allows compensation of wear through axial movement of the rotor disc. The discs are made of hardened, acid-resistant steel with Brinell hardness of about 400 H<sub>B</sub>. High corrosion resistance ensures negligible abrasive wear.

Grubbens deflaker type GLD 200 and 360 have a fixed axial rotor disc. On type GLD 360 HW the rotor disc is axially adjustable. The disc gap can easily be adjusted using a hand wheel which will enhance the performance of the deflaker.

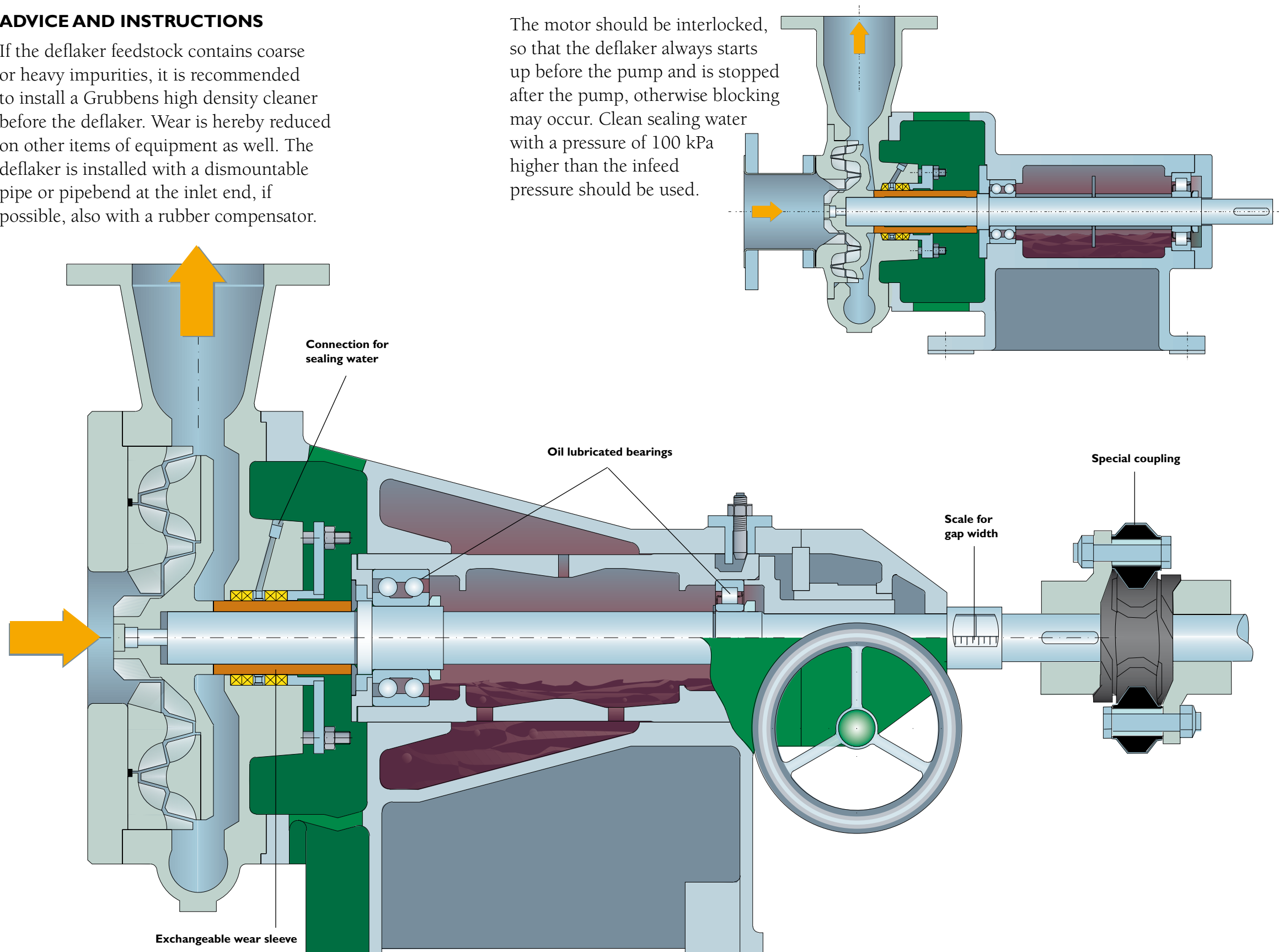
The deflaker is powered by direct coupling, squirrel-cage motor. Greasing is done with oilbath according to instructions on the machine plate.



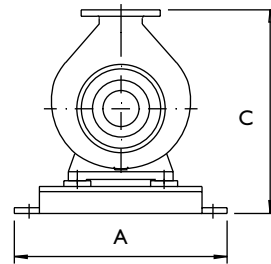
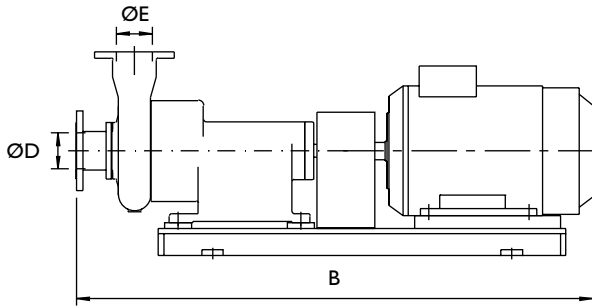
## ADVICE AND INSTRUCTIONS

If the deflaker feedstock contains coarse or heavy impurities, it is recommended to install a Grubbens high density cleaner before the deflaker. Wear is hereby reduced on other items of equipment as well. The deflaker is installed with a dismantable pipe or pipebend at the inlet end, if possible, also with a rubber compensator.

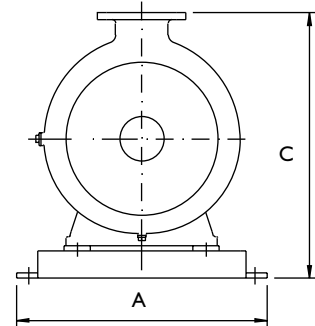
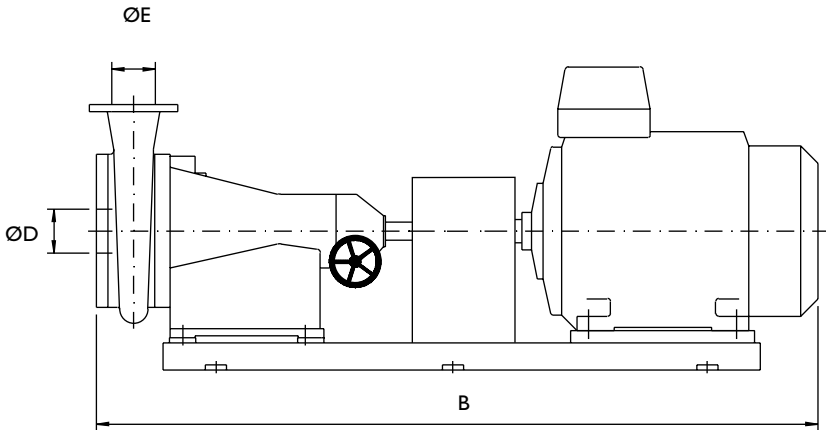
The motor should be interlocked, so that the deflaker always starts up before the pump and is stopped after the pump, otherwise blocking may occur. Clean sealing water with a pressure of 100 kPa higher than the infeed pressure should be used.



# TECHNICAL DATA



Typ	A	B	C	D	E	Motor power kW / 50Hz	Weight kg excl. motor
G LD 200	590	1430	565	100	100	22-30	235
G LD 360	655	1730	745	125	125	55-75	475



Typ	A	B	C	D	E	Motor power kW / 50Hz	Weight kg excl. motor
G LD 360 HW	710	2050	745	125	125	55-75	535

Inlet consistency, 2-6%.  
General values at e.g 4%.

GLD 200	0-35 TPD
GLD 360	0-70 TPD
GLD 360 HW	0-70 TPD



**Cellwood Machinery**  
FOR BETTER PULP AND PAPER