

GRUBBENS STOCK PUMP

For consistency between 2 – 8%



GRUBBENS STOCK PUMP

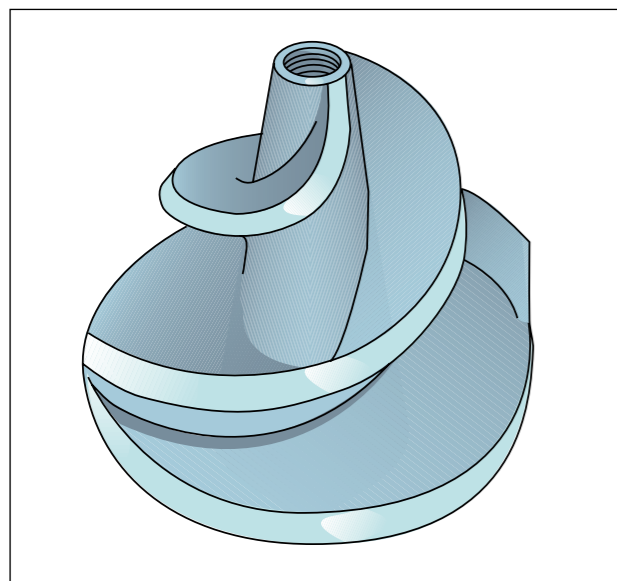
For consistency between 2 – 8%

Grubbens centrifugal pumps are specially designed for transportation of liquids with variable consistency, or liquids containing air bubbles and lumps.

Stock concentration up to 8% can be pumped without in-feed pressure. With in-feed pressure it can even manage to pump up to 12%.

It has a strength and stability which gives it a wide application.

Acting as an impeller you will find our conical-concave rotor, which gives the pump a high hydraulic efficiency and a problem free pulp transportation. The self-ventilating rotor has no constrictions and therefore minimises the risk of blocking.



Grubbens impeller

The open vanes engage helically all the way to the suction stub.

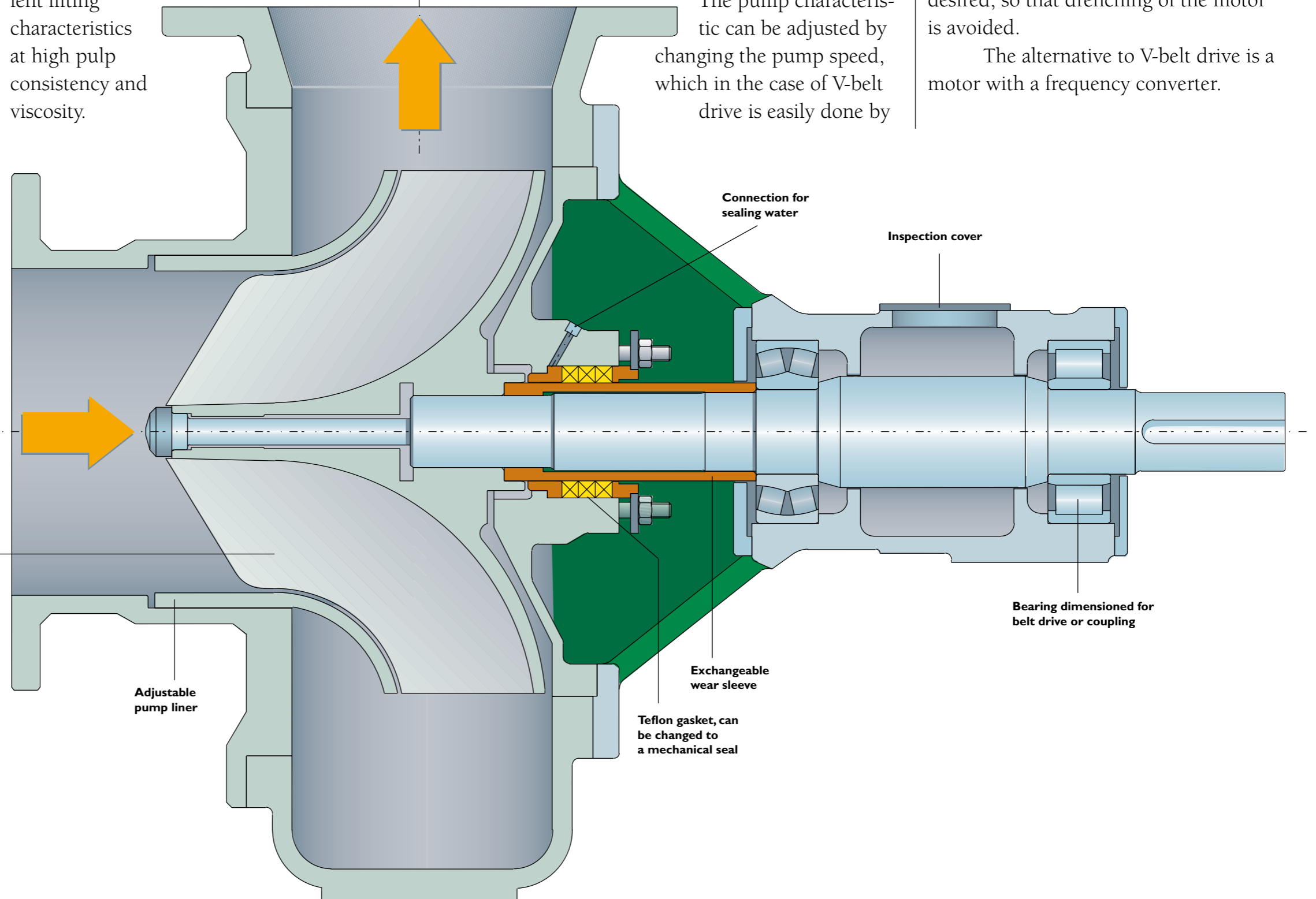
The design gives the pump excellent lifting characteristics at high pulp consistency and viscosity.

The pump lining is adjustable which provides the possibility to compensate for wear.

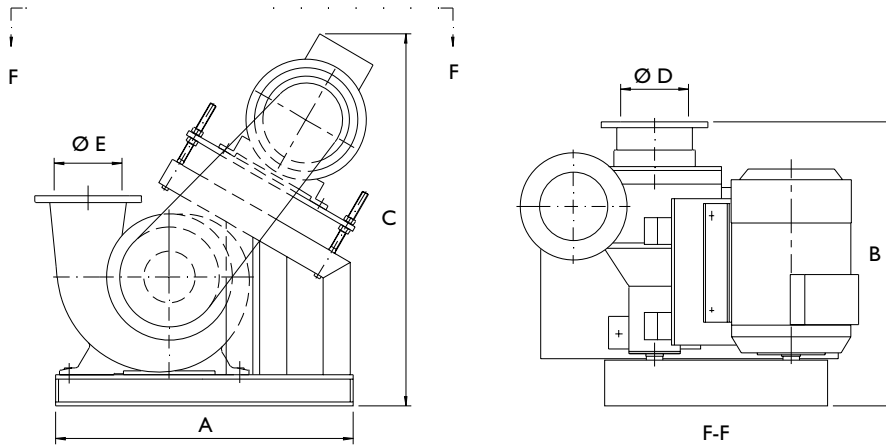
The pump characteristic can be adjusted by changing the pump speed, which in the case of V-belt drive is easily done by

changing the pulleys. When the power transmission is by V-belt drive the motor can be placed above the pump, if so desired, so that drenching of the motor is avoided.

The alternative to V-belt drive is a motor with a frequency converter.

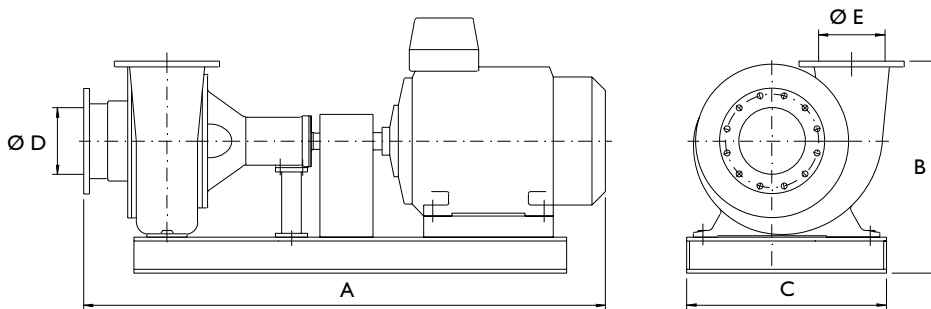


TECHNICAL DATA



FOR BELT DRIVE

Typ	A	B	C	D	E	Motor power kW	Pump speed r/min	Weight kg excl motor
G P16-10 G P16-10 MC	600	525	870	125	100	15	2900	140
G P26-11 G P26-11 MC	820	750	1150	150	150	55	2500	350
G P26-15 G P26-15 MC	820	750	1150	150	150	55	2150	350
G P40-14 G P40-14 MC	1100	1000	1630	150	250	90	1500	470
G P40-25 G P40-25 MC	1100	1000	1630	250	250	90	1200	470



FOR DIRECT DRIVE

Typ	A	B	C	D	E	Motor power kW	Pump speed r/min	Weight kg excl motor
G P16-10 G P16-10 MC	1140	380	290	125	100	15	2900	140
G P26-11 G P26-11 MC	1660	550	510	150	150	55	2500	350
G P26-15 G P26-15 MC	1660	550	510	150	150	55	2150	350
G P40-14 G P40-14 MC	1960	795	750	150	250	90	1500	470
G P40-25 G P40-25 MC	1960	795	750	250	250	90	1200	470

VOLUME FLOW 1-1000 m³/h
PRESSURE HEAD 2-60 m



Cellwood Machinery
FOR BETTER PULP AND PAPER